

The logo for CEA (Commissariat à l'énergie atomique et aux énergies alternatives) features the lowercase letters 'cea' in a white, rounded, sans-serif font. A thin green horizontal line is positioned directly beneath the text. The logo is centered within a solid red square.The logo for PASREL imagerie consists of a stylized, multi-colored arc (blue, green, and yellow) positioned above the word 'PASREL' in a bold, blue, sans-serif font. Below 'PASREL', the word 'imagerie' is written in a smaller, blue, sans-serif font. The entire logo is centered within a white rectangular box.

In vivo imaging to de-risk your medical innovations

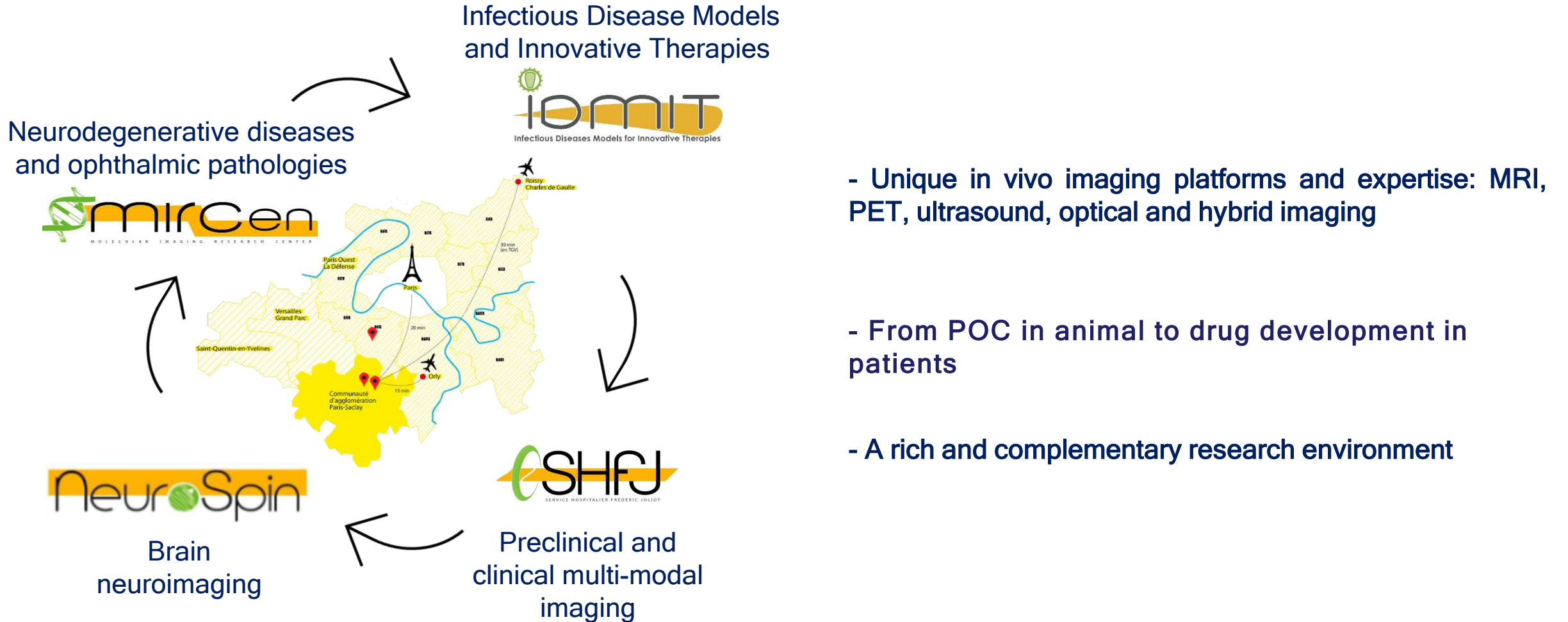
CEA

- Technological Research for Energy and Life Science
- National Research Organization
- ~20 000 staff, ~2 000 PhD students

PASREL-imagerie

- CEA centers dedicated to translational in vivo imaging
- A strong and long-standing know-how
- A facilitated access to PASREL-imagerie platforms and expertise for drug development industry





Radiotracers

- ✓ 3 cyclotrons: ^{11}C , ^{18}F , ^{15}O , ^{68}Ga
- ✓ Access to ^{89}Zr , ^{177}Lu and ^{64}Cu
- ✓ Labelling of small and large molecule

**PET****Multimodal Imaging**

PET-CT / PET-MRI / PET-US /
SPECT-CT / MRI-US

**Radiopharmaceuticals****PET****Multimodal Imaging**

PET-CT / PET-MRI /
SPECT-CT

**Preclinical research****Clinical Phases****Two-photon microscopy**

Multiple labeling

**MRI**

3T / 7T / 17.2T

**Ultrasound**

Imaging & Therapeutical

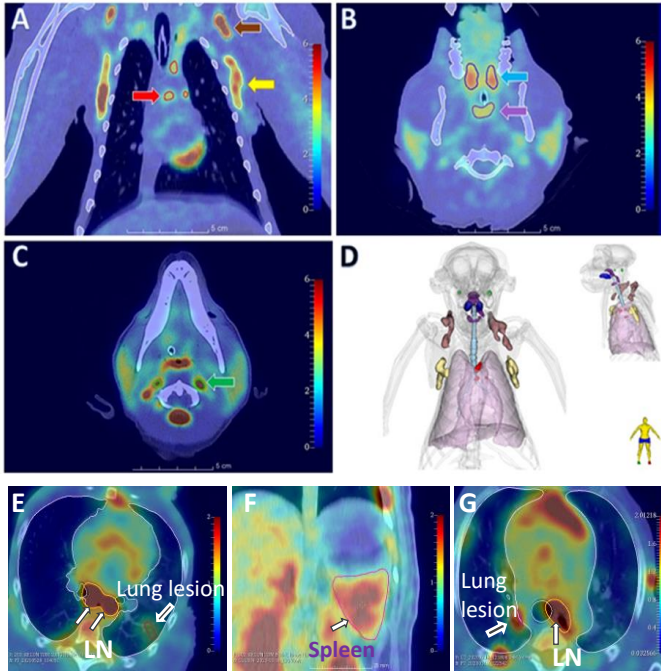
**MRI**

1,5T / 3T / 7T / 11,7T

**Ultrasound**

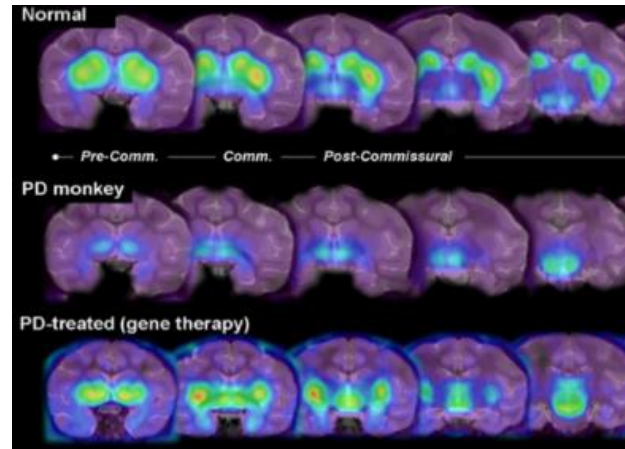
- ✓ Rodents & NHP
- ✓ BSL1 to 3 environment

PET-CT



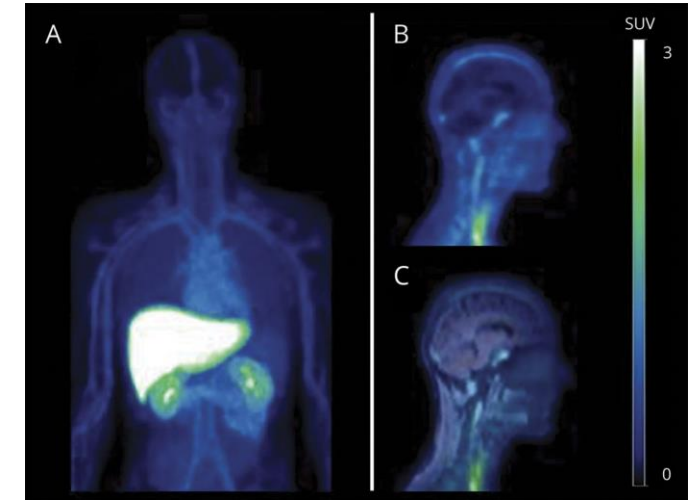
Infection effect of Sars-Cov-2 in NHP
- [^{18}F]FDG

PET



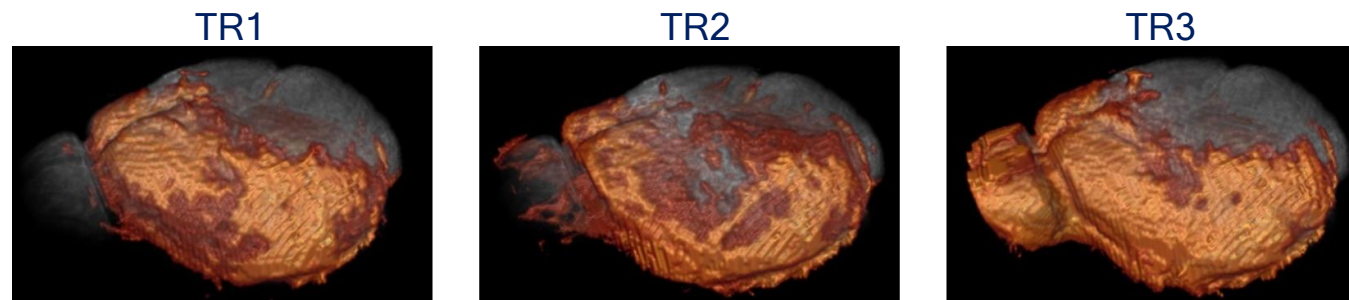
Gene therapy efficacy on a NHP
model of Parkinson's disease - [^{18}F]
6- FMT

PET/MRI



Biodistribution of marketed drug
Microdose for clinical Ph 0 -
[^{11}C]Glyburide

Mn2+ Enhanced MRI



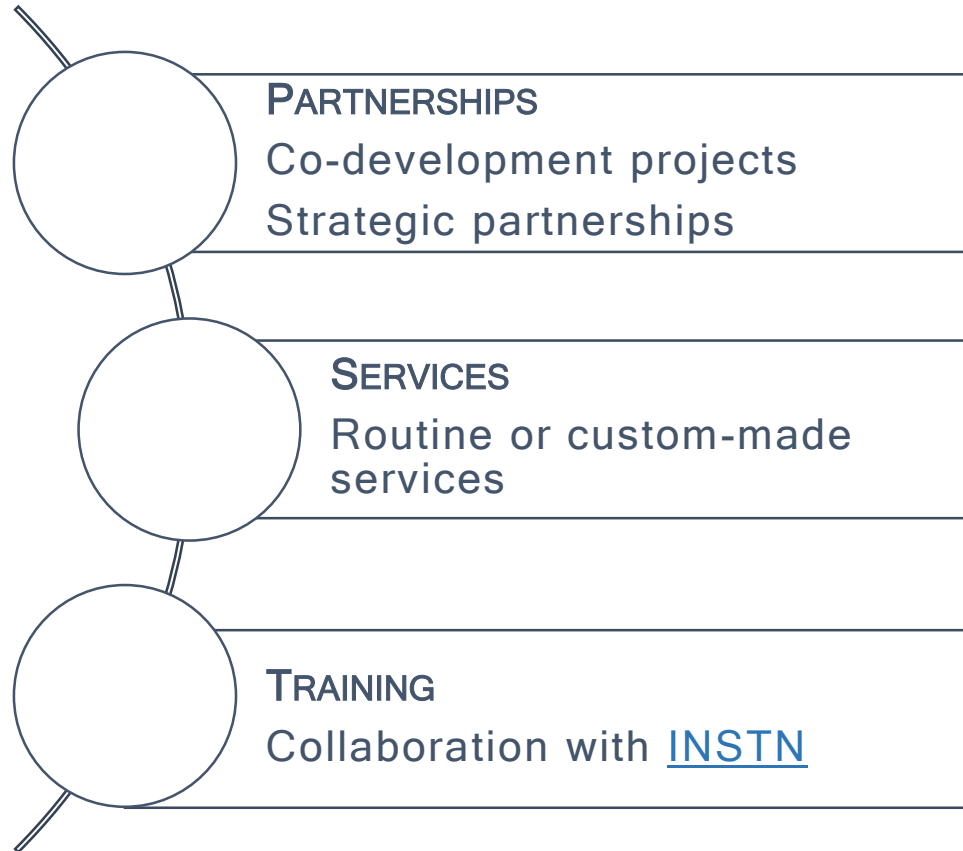
Drug effects on functional neuroimaging in mouse



BSL 1-2-3 ENVIRONMENTS

FULL SET OF OFFER	Animal models	Genomics	Viral vector production	Anatomopathology			Anatomopathology
	General and stereotactic surgery	Proteomics	Biotherapy	Immunohistochemistry	Genomics	MEG	Immunohistochemistry
	Cognitive and motor behavior	Metabolics	Aptamer	Optical imaging	BioBanking	EEG	Optical imaging
	Flow & Mass spectrometry	Biochemistry	BioBanking	Ex vivo imaging	Proteomics	Machine learning & IA	Ex vivo imaging
	Cell sorting						

RESEARCH EXPERTISE	Neurodegenerative diseases		Oncology		Chronic mental illnesses in adult		Research protocol management
	Ophthalmology		Infectious diseases		Neurodegenerative diseases		Brain development pathology
					Brain tumors		Normal aging



A quality management process

- A dedicated manager
- Instrument maintenance and calibration
- Data security, confidentiality and storage
- Project traceability
- Formalized protocols
- Compliance with ethical and regulatory aspects
- Staff competence and empowerment

World-renowned key players with long-standing collaborations with industry





Infectious diseases and innovative therapies



Brain neuroimaging



Neurodegenerative & ophthalmic diseases



Radiopharmacology and Clinical imaging



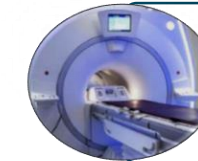
Radiotracers



PET



Ultrahigh field MRI



Multimodal imaging



Ultrasound

Services

Partnerships

Training

FOUR MULTIDISCIPLINARY CENTERS

STATE-OF-THE-ART TRANSLATIONAL IN VIVO IMAGING

A CUSTOM-MADE OFFER



+33 6 17 86 48 70



bd@pasrel-imagerie.com



[Pasrel Imagerie](#)



[PASREL-PROJECT](#)



4 Pl. du Général Leclerc - 91400 Orsay